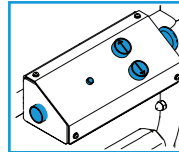


**ENTERING AND LEAVING THE WORK PLATFORM**



Always use **three points of contact** when entering or exiting the platform, using the guardrails provided. For example, use **two hands and one foot**, as shown left. Use the step provided on the base of the machine. On entering the platform, ensure that the gate is closed behind you.

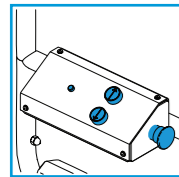
**PLATFORM CONTROLS**



The Control module houses the platform raise and lower controls. Press the **Enable & 'UP' button** to raise the platform. Press the **Enable & 'DOWN' button** to lower the platform.

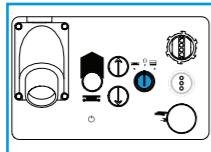
Take care to avoid repeated jerky movements which could cause unnecessary impact loads on the structure.

**EMERGENCY STOP**

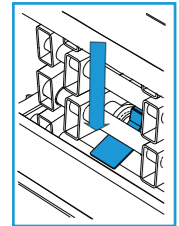


An emergency stop button is provided on the control module. Once depressed, this isolates power to the raise and lower functions. **To restore functionality, pull the emergency stop button to release.**

Turning the Maintenance Isolator switch to the '0' position also has the effect of isolating power to the raise and lower functions.



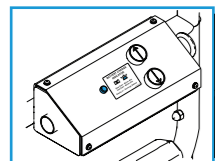
**EMERGENCY LOWERING**



To lower the platform in the event of an emergency, a control is provided at the chassis. **Simply push the handle and the platform will start to lower.** Release the handle to stop the platform from lowering. The handle is spring loaded and will return to the closed position automatically.

**BATTERY CHARGING**

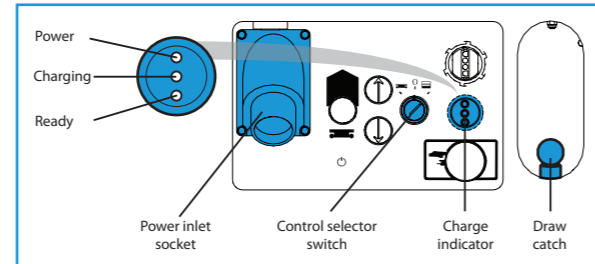
A battery condition meter is fitted to the Pop Up as shown.



- 0° : 100% to 40%
- ⚡ Slow Flash : 40% to 20%
- ⚡ Fast Flash : 20% to 10%
- Steady : Less than 10%

The PRO iQ Access Platform is supplied with a built-in multi voltage automatic battery charger, for supply voltages between 90V and 240V AC. The battery charger is located in the lower tray of the machine.

To charge the battery, follow these steps:



1. Turn the control selector to ground control position.
2. Open the lower tray drawer slightly using the drawer catch. This is to provide ventilation of the battery during charging.
3. Attach a power inlet lead to the power inlet socket.
4. The power LED illuminates and the charger assesses the state of charge in the battery.
5. The charger will now complete the charge cycle and once completed will turn the charger into 'oa t maintenance mode'.
6. Once charging has been completed, turn the control selector switch to 'O'; remove the power lead and close the lower tray drawer.

**PRE-OPERATION CHECKLIST**

1. Check structure (e.g. damage, cracks, corrosion, abrasion, welds, connections)
2. Check platform (floor, rails, handrail sockets)
3. Check castors (smooth movement, damage)
4. Check brakes.
5. Check oil leaks.
6. Ensure battery is fully loaded.
7. Ensure raise and lower functions operate well.
8. Check emergency stop and lowering functions.
9. Check safety decals.

**OPERATING SPECIFICATIONS**

Safe working load (SWL).....	240kg
equivalent to .....	1 person + tools
Maximum platform height.....	3.00 metres
Maximum working height .....	5.00 metres
Platform length .....	1.09 metres
Platform width .....	0.52 metres
Platform guard rail height .....	1.10 metres
Toe board height .....	0.15 metres
Maximum allowable manual force.....	200 Newtons
Maximum allowable wind speed.....	0 metres/sec
Maximum allowable chassis inclination.....	2.0 degrees
<b>Electrical system</b> .....	
Motor .....	12 volt DC
Batteries .....	92 Amps
Battery charger .....	1 x 105 Ah
	Self-seeking automatic
	90-240V AC
<b>Hydraulic system</b> .....	
Maximum pressure .....	19.3 MPa
Reservoir capacity .....	3.78 litre
<b>Function speeds (approx.)</b>	
Raise .....	14 seconds
Lower .....	14 seconds
Approx. no. of lifts (fully charged + SWL).....	120
Overall length (stowed) .....	1.23 metres
Overall height (stowed) .....	1.78 metres
Overall width (stowed) .....	0.76 metres
Overall mass (GVW) .....	370kg
Maximum wheel load .....	240 kg

**EQUIPMENT CARE**

**Never push the equipment beyond its design limits.** If it will not do what you want with reasonable ease and speed, assume you have the wrong tool for the job. Contact Thermaright for advice.

**Keep the equipment clean,** you will find this less of a chore if you clean it regularly, rather than wait until the end of the hire period.

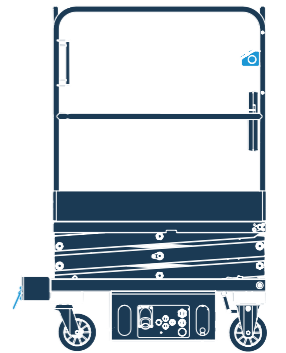
When not in use, **store the equipment somewhere clean, dry and safe** from thieves and unauthorised users.

**FINISHING OFF**

**Lower the cage and exit. Turn the unit off** and as a safety precaution, **press red STOP button.** **Collect all parts together and give them a final clean up ready for return,** to Thermaright.

501/01

Operating & Safety Guide 501



**PRO iQ ACCESS PLATFORM**

Simple, quick and safe powered portable access lift, perfect for construction site and maintenance applications.

**... have you been trained**

The law requires that personnel using work equipment have received adequate training and must be competent when using the equipment within the workplace.

**...any comments?**

If you have any suggestions to enable us to improve the information within this guide please e-mail your comments or write to the Safety Guide Manager at the address below e-mail: info@thermaright.co.uk



Code 87203

Thermaright Hire Solutions LTD  
Unit 2, Modular Court, Enterprise Drive,  
Wolverhampton, WV10 7DF  
www.thermaright.co.uk

## GENERAL SAFETY

For advice on the safety and suitability of this equipment contact Thermaright.

There is a serious risk of personal injury if you do not follow all instructions laid down in this guide.

The hirer has a responsibility to ensure that all necessary risk assessments have been completed prior to the use of this equipment.

This equipment should only be used by an operator who has been deemed competent to do so by his/her employer.

This equipment is designed to be used by an able bodied, competent adult who has read and understood these instructions. Anyone with either a temporary or permanent disability should seek expert advice before using it.

Keep children, animals and bystanders away from the work area. Cordon off a NO GO area using cones and either barriers or tape, available for hire from Thermaright.

Never use this equipment if you are ill, feeling tired, or under the influence of alcohol or drugs.

Wear practical, protective clothing, gloves, footwear and a protective hard hat. Avoid loose garments and jewellery that could catch in moving parts, tie back long hair.

Do not work near flammable gases or liquids, petrol or paint thinner fumes for example. Keep combustible materials at a safe distance – at least 5m.

Make sure you know how to switch this equipment OFF before you switch it ON in case you get into difficulty.

Make sure you know how to operate this equipment safely and are aware of its limitations before you use it.

Make sure that everyone is warned of what you are doing.

This machine is designed for internal use only. If working in a building which has large openings where wind gusts occur, DO NOT USE THE MACHINE.

The maximum number of occupants must not exceed one.

Never use the lift near overhead power lines or similar hazards.

Never exceed the equipment's safe working load of 240Kg.

Never operate the equipment alone. Ensure a competent adult is always within shouting range to operate the manual descent system or come to your aid if anything should go wrong.

Never use the platform as a goods lift or crane.

Never try to move the platform on its castors when elevated.

Never extend the height of the platform by using boxes, steps ladders etc.

Never modify the PRO iQ Access Platform in any way without the full approval of the manufacturer.

Never manoeuvre the platform on an inclined surface otherwise it may become uncontrollable.

Never manoeuvre the PRO iQ whilst in its elevated position, as this may cause instability.

Never enter or exit the platform unless the platform is in the lowered and transport position.

Never apply external side loads to the platform or scissor structure.

Never allow persons at ground level to operate the controls whilst the platform is occupied (unless in an emergency situation).

### WARNING

**THIS MACHINE HAS NOT BEEN DESIGNED FOR OPERATION WITHIN POTENTIALLY EXPLOSIVE ATMOSPHERES**

## ELECTRICAL SAFETY

### WARNING

**THIS MACHINE IS NOT ELECTRICALLY INSULATED AND MUST NEVER BE USED FOR LIVE LINE WORKING. DEATH OR SERIOUS INJURY CAN RESULT FROM CONTACT WITH, OR INADEQUATE CLEARANCE FROM, ELECTRICAL CONDUCTORS**

### FIRE WARNING

**BATTERIES GENERATE HIGHLY FLAMMABLE AND POTENTIALLY EXPLOSIVE HYDROGEN GAS WHEN CHARGING, SO, UNTIL CHARGING IS OVER AND THE GAS HAS DISPERSED...**

**ALWAYS STAND THE LIFT IN A WELL-VENTILATED SPOT, PREFERABLY IN THE OPEN AIR. ALWAYS OPEN THE BATTERY COMPARTMENT COVER. NEVER SMOKE OR ALLOW NAKED LIGHTS AND OTHER IGNITION SOURCES INTO THE AREA.**

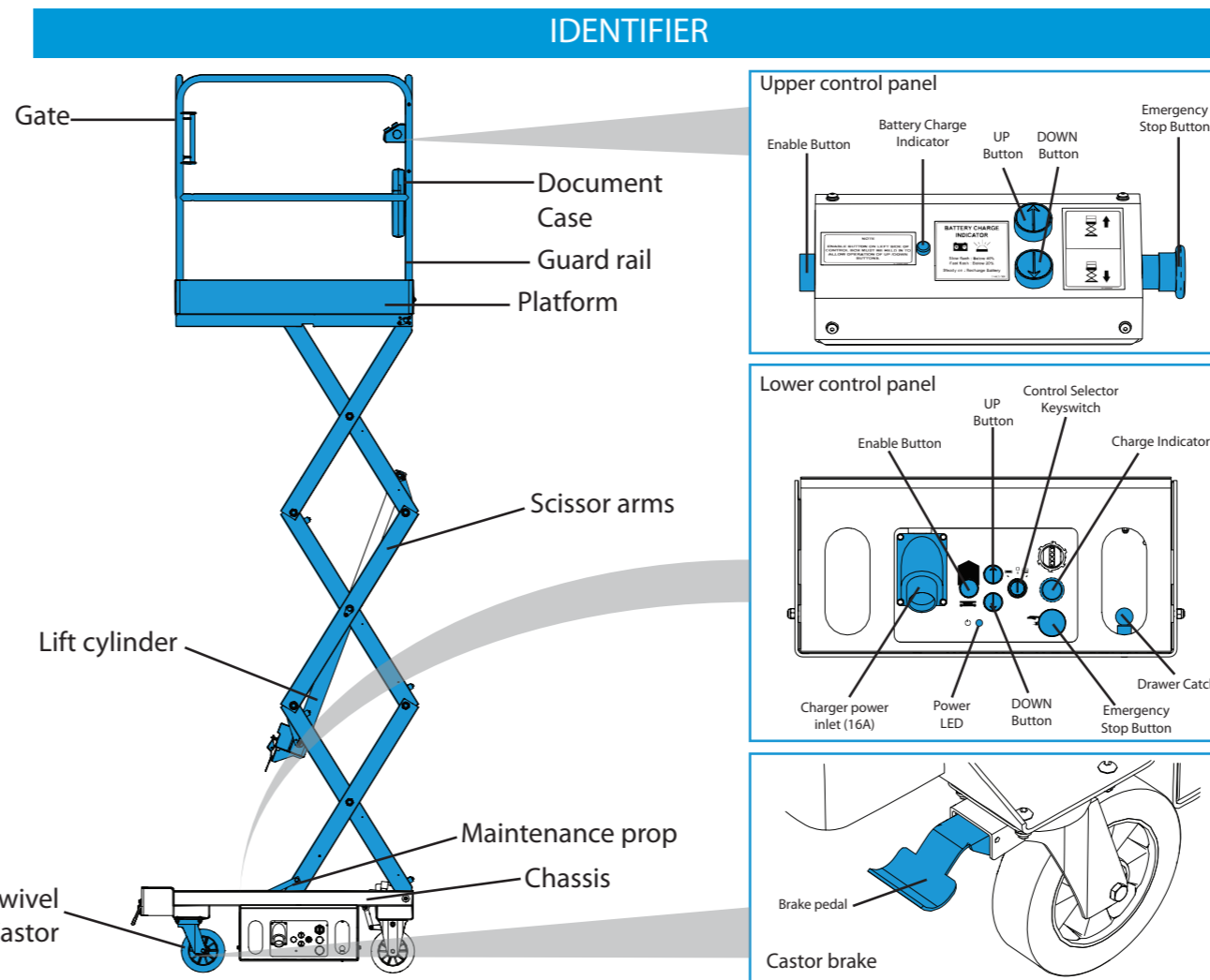
The PRO iQ Access Platform is powered by 12v DC batteries. Always fully charge before use and recharge at regular intervals.

DO NOT OPERATE if the battery charge indication is below 25%

Never operate the lift when charging the battery.

After charging, switch OFF the power supply and disconnect the power supply lead from the charger. If the charger fails, or its power supply cable or lead becomes damaged, return the unit. Do not attempt to repair anything yourself.

Keep the charger dry at all times. Using electrical equipment in wet or damp conditions can be dangerous.



## GETTING STARTED

The PRO iQ Access Platform is a scissor lift type work platform, which is manoeuvred manually into work positions and elevated and lowered using an electro-hydraulic control system.

PRO iQ Access Platform must not be used in applications or for uses outside of the scope of this operating safety guide. Should a certain application not be covered, then Thermaright should be contacted.

This guide provides information on the safe operation of the PRO iQ Access Platform. Operators should read and understand all of the information contained within this manual prior to operating the platform.

This machine has been tested for Electromagnetic Compatibility (EMC) however, operation near to high

powered radio transmission apparatus (e.g. radar, antennae) or within strong electrical and/or magnetic fields may affect some features of this product.

Before operating platform familiarise yourself with the work area, check for possible hazards such as potholes, ramps, slopes and overhead obstructions that could affect the safe use of the equipment.

Operating procedures should be preceded with pre-operation checks (see Pre-operation checklist).

If checks reveal malfunctions or damage on the PRO iQ Access Platform, then the machine must not be used until the problem is rectified.

If in doubt, seek further assistance from your local HSS Hire.

If safety decals are no longer legible or missing, please also contact Thermaright.

## BASIC TECHNIQUES

Select a site for the machine from which the platform will be able to reach the required work area. A visual inspection of the operating site should be made before setting up the machine.

Ensure that the ground on which the PRO iQ is to operate is capable of supporting the weight of the machine (including the weight of the operator plus tools and materials). Be aware of floors or coverings (e.g. manhole covers) that may not withstand point loadings exerted by the castor wheels.

The platform must only be operated on flat (0° chassis inclination) and level surfaces. The machine will cease elevate if the level of inclination exceeds the programmed limits. All castor wheels must be in full contact with the ground.

Ensure that adequate clearance is available above and around the platform before elevation.

### MANOEUVRING THE PLATFORM

Manoeuvre the platform into position using both hands on the guard rails at gate end. Take care to avoid trapping hands or feet whilst manoeuvring the platform.

Never manoeuvre the PRO iQ whilst it is elevated or with a person, tools or materials in the platform.



### ENGAGING THE BRAKES

Always ensure that both castor brakes are locked before elevating the work platform to prevent any inadvertent movement. The brakes are engaged by pushing down on the lever and pulling up the lever as shown.

### POWERING UP

The PRO iQ Access Platform is provided with a key operated switch which is used to isolate the battery and therefore the electrical system, preventing unauthorised use. To enable the electrical system, first pull out both emergency stop buttons and insert the key into the control selector keyswitch. Turn the key switch to select ground position controls. The alarm sounder will activate. The machine is ready for use as soon as the sounder stops. The control selector switch can be turned to select the platform controls.

Ensure that when the machine is not in use, the emergency stop buttons are depressed and the key is removed.